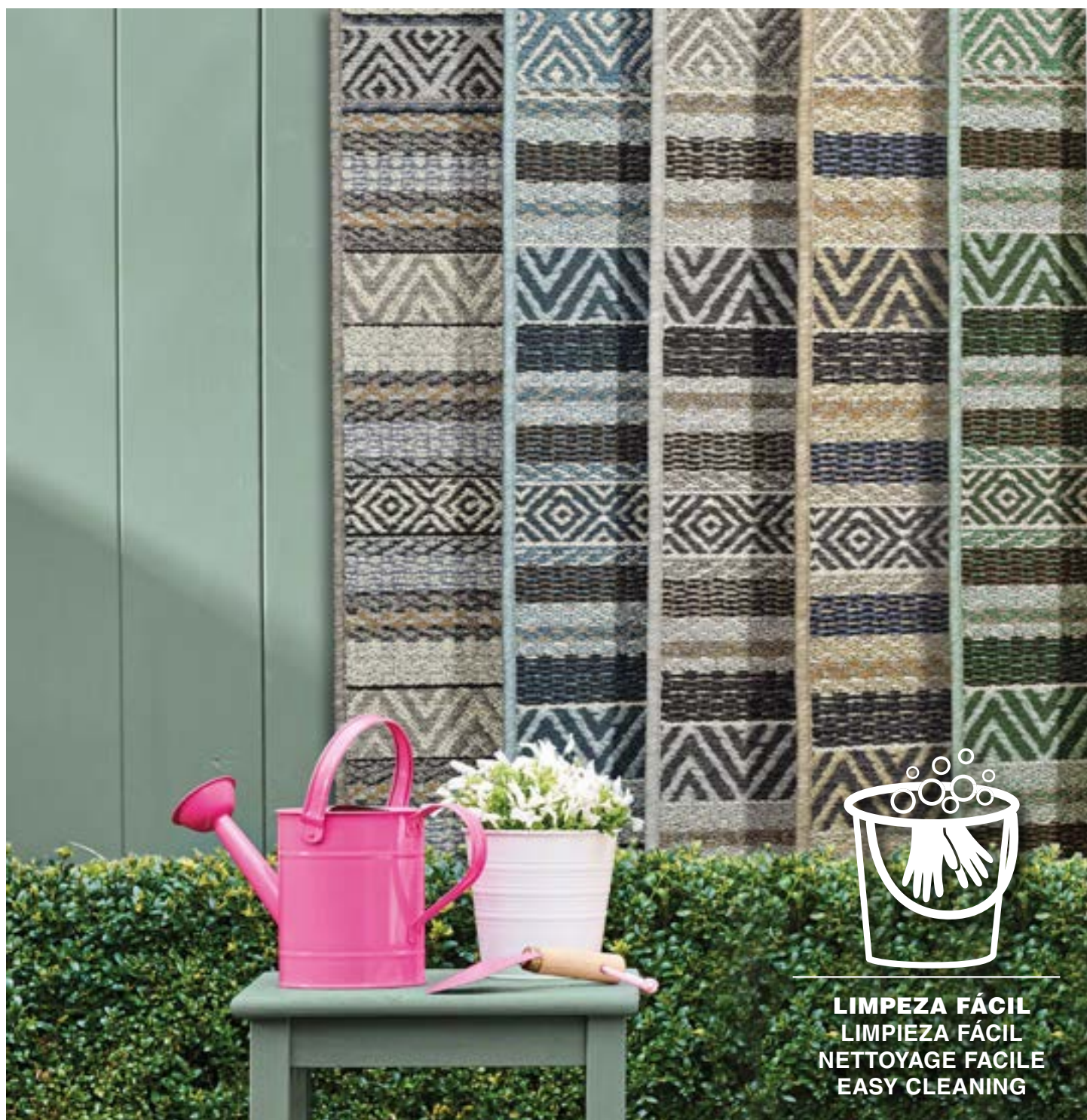




IN & OUT

RUGS COLLECTION | 2021



LIMPEZA FÁCIL
LIMPIEZA FÁCIL
NETTOYAGE FACILE
EASY CLEANING



IN & OUT

RUGS COLLECTION | 2021

RESISTENTE À AGUA E AOS RAIOS UV

Resistente al agua y a los rayos UV
Résistant à l'eau et aux UV
UV and Water resistant



USO FREQUENTE

Usos frecuentes
Usage intensif
Frequent use



LIMPEZA FÁCIL

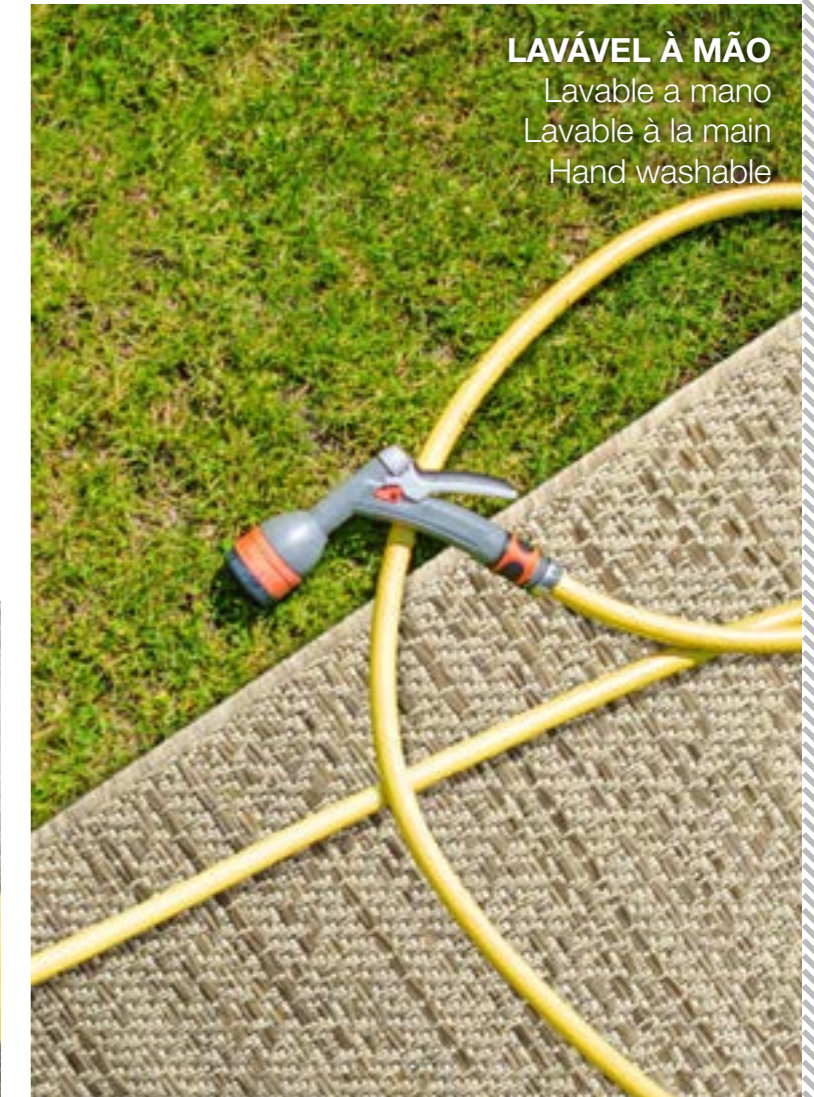
Limpeza fácil
Nettoyage facile
Easy cleaning





LIMPEZA FÁCIL

Limpeza fácil
Nettoyage facile
Easy cleaning



LAVÁVEL À MÃO

Lavable à mano
Lavable à la main
Hand washable

MANCHAS | TÂCHES | STAINS

Reagir rapidamente

Não permita que as manchas sequem, remova-as de imediato. Trate a nódoa com um pano limpo e húmido (água e sabão);

Actuar rápidamente

No permita que las manchas sequen. Limpie de inmediato. Trate la mancha con un paño limpio y húmedo (água y jabón).

React quickly

Do not allow stains to dry in, but remove them immediately with a clean damp kitchen cloth (using water and soap)

Reagir rapidement

Ne laissez pas les tâches sécher, enlevez-les tout de suite avec un chiffon propre et humide (eau et savon).



— KITCHEN —

Ref. / (cm)	80x200	100% Polipropileno polypropylène polypropylene polypropylen	Essessura Grosor	Peso
			Épaisseur Thickness Höhe	Poids Weight Gewicht
			5 mm	1500 g/m ²



47025/053



47113/053



19251/699



19213/064



34504/065



34523/032



34523/600



19291/099



48191/060

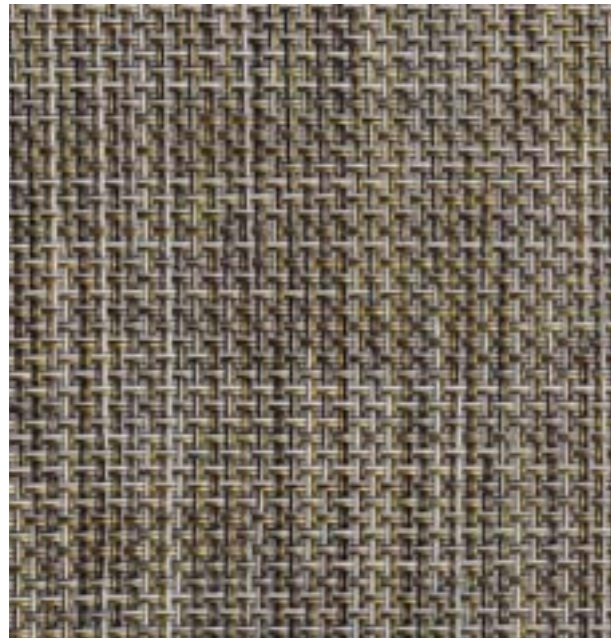


34521/032



Kitchen 48191/060

— DENON —



001/002



001/233



002/017



002/008



Ref. / (cm)	60x120	80x150	67X250	120X170	140X200	160X230
70% PVC 30% Polyester Limpar com uma esponja e detergente neutro. Enxaguar com água; Limpiar con una esponja y jabón suave. Enjuagar con agua. Clean with a sponge and mild detergent. Rinse with water						Espessura Grosor Épaisseur Thickness Höhe 3 mm



Denon 001/002

— AGADIR —



15513/699



15513/553



Agadir 15513/699

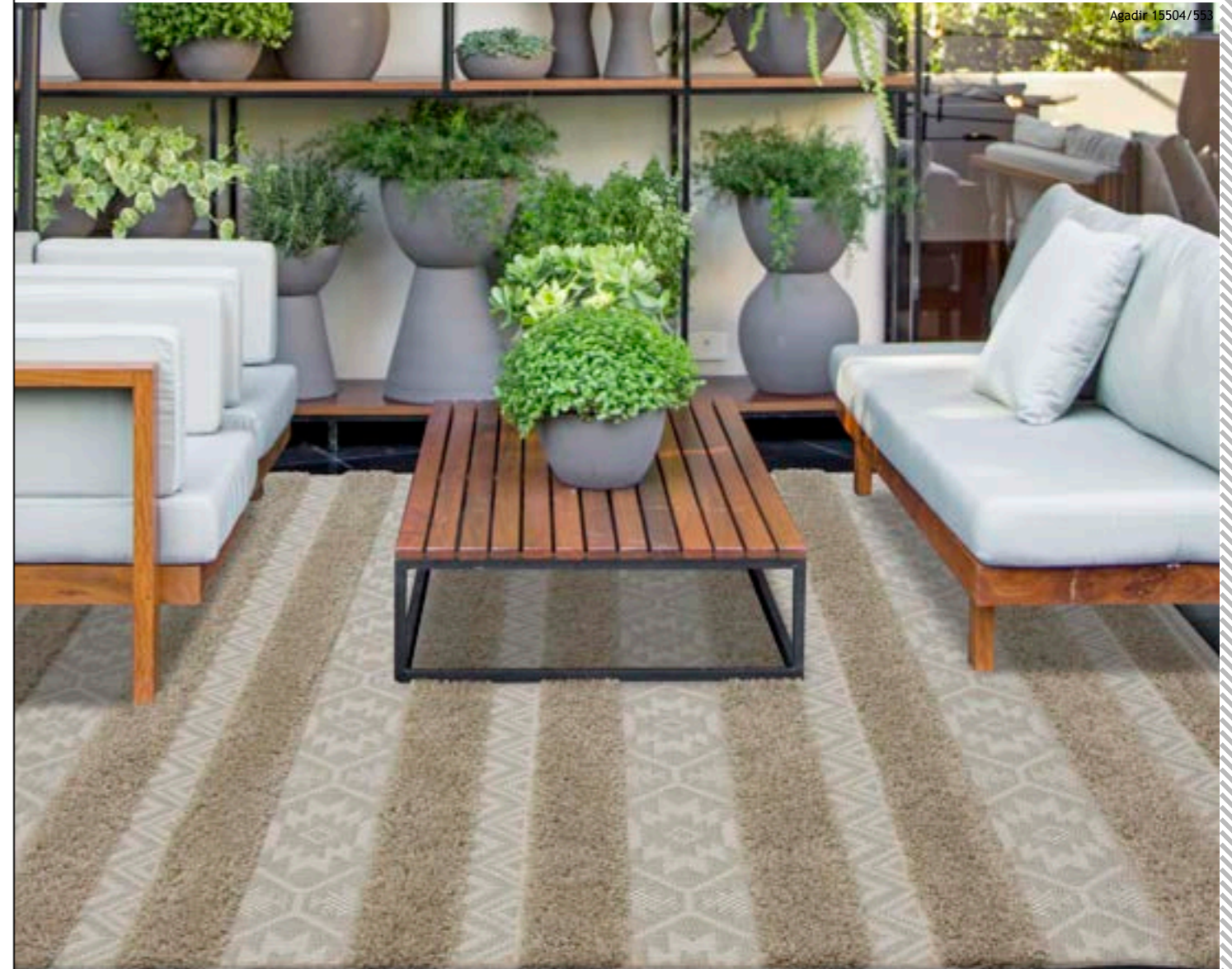
IN & OUT - AGADIR



15504/669



15504/553



Agadir 15504/553

Ref. / (cm)	120x170	Ø 160x160	160x230	200x290
15513/699		•		
15513/553		•		
15504/669	•		•	•
15504/553	•		•	•

100% Polipropileno Polypropylène Polypropylene Polypropylen	Espessura Grosor Épaisseur Thickness Höhe	Peso Poids Weight Gewicht
☑ ☒ ☒ ☒ ☒	22 mm	1200 g/m ²



— L I D O —



Ref. / (cm)	080x150	140x200	160x230	200x290
-------------	---------	---------	---------	---------

100% Polipropileno Polypropylène Polypropylene ☒☒☒☒☒☒	Espezzura Grosor Épaisseur Thickness Höhe	Peso Poids Weight Gewicht
	flatweave < 5 mm	1600 g/m ²



19658/469



19658/399



19658/749



19658/353



Lido 19658/469

—BOTANIC CHENILLE—

Ref. / (cm)	123x180	160x230	206x290	246x340
-------------	---------	---------	---------	---------

26% Poliéster | Poliester | Polyester
74% Poliprolileno | Polypropylene |

Espessura | Grosor
Épaisseur | Thickness | Höhe

Peso
Poids | Weight | Gewicht



3,5 mm

1000 g/m²



7517/001



7517/004



7517/005



7517/007



Botanic Chenille 7517/001



— ETHNIC CHENILLE —



Ref. / (cm)	123x180	160x230	206x290	246x340
-------------	---------	---------	---------	---------

26% Poliéster | Poliester | Polyester
74% Poliprolileno | Polypropylene

Espeçura | Grosor
Épaisseur | Thickness | Höhe

Peso
Poids | Weight | Gewicht



3,5 mm

1000 g/m²



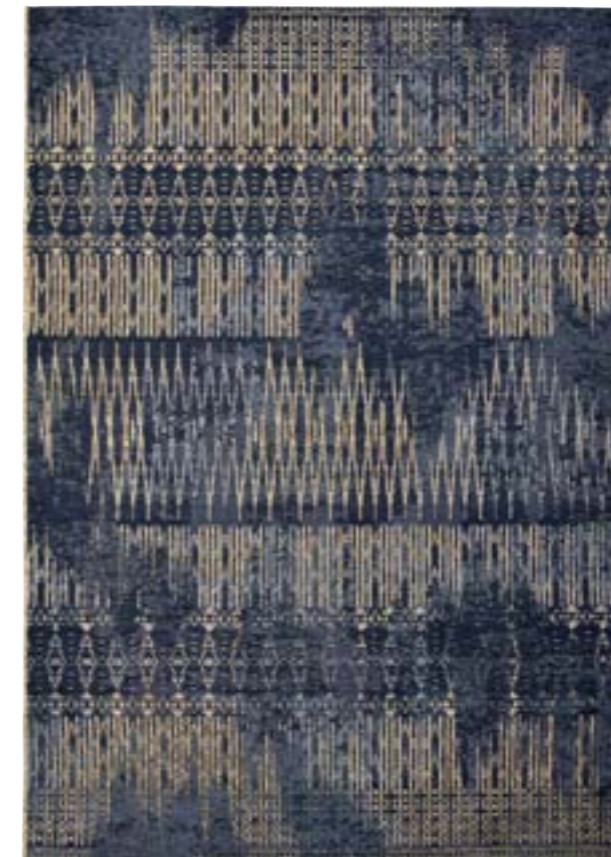
5582



5545



5866 Terra



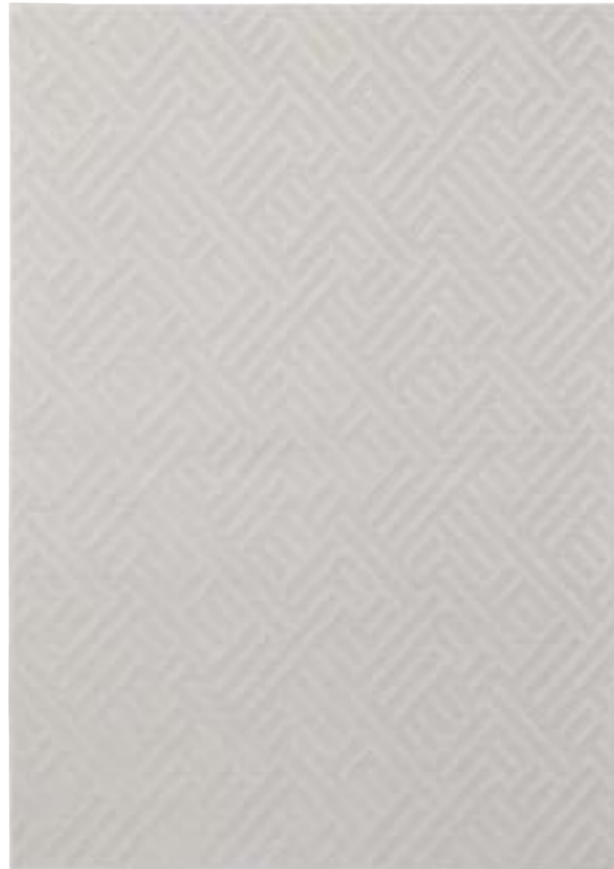
5866 Blue



3768



— SCALA —



42104/050



42104/096



42112/090



42112/596

Ref. / (cm)	80x150	140x200	160x230	200x290
-------------	--------	---------	---------	---------

100% Polipropileno
Polypropylène | Polypropylene | Polypropylen

Espeçura | Grosor
Épaisseur | Thickness | Höhe

Peso
Poids | Weight | Gewicht



6 mm

1700 g/m²



In & Out



- TATAMI -



Ref. / (cm)	67x250	67x300	80x150	120x170	140x200	160x230	200x290
100% Polipropileno Polypropylène Polypropylene Polypropylen Interior/ Exterior- resistente a raios UV e água Intérieur/Extérieur - résistant aux rayons UV et à l'eau Indoor/ Outdoor - UV resistant / water resistant Innen/Aussen - UV - Strahlungen und Wasserfest ☒☒☒☒☒☒	Espessura Grosor Épaisseur Thickness Höhe						Peso Poids Weight Gewicht
	5 mm						1700 g/m ²



39003/363



39003/837



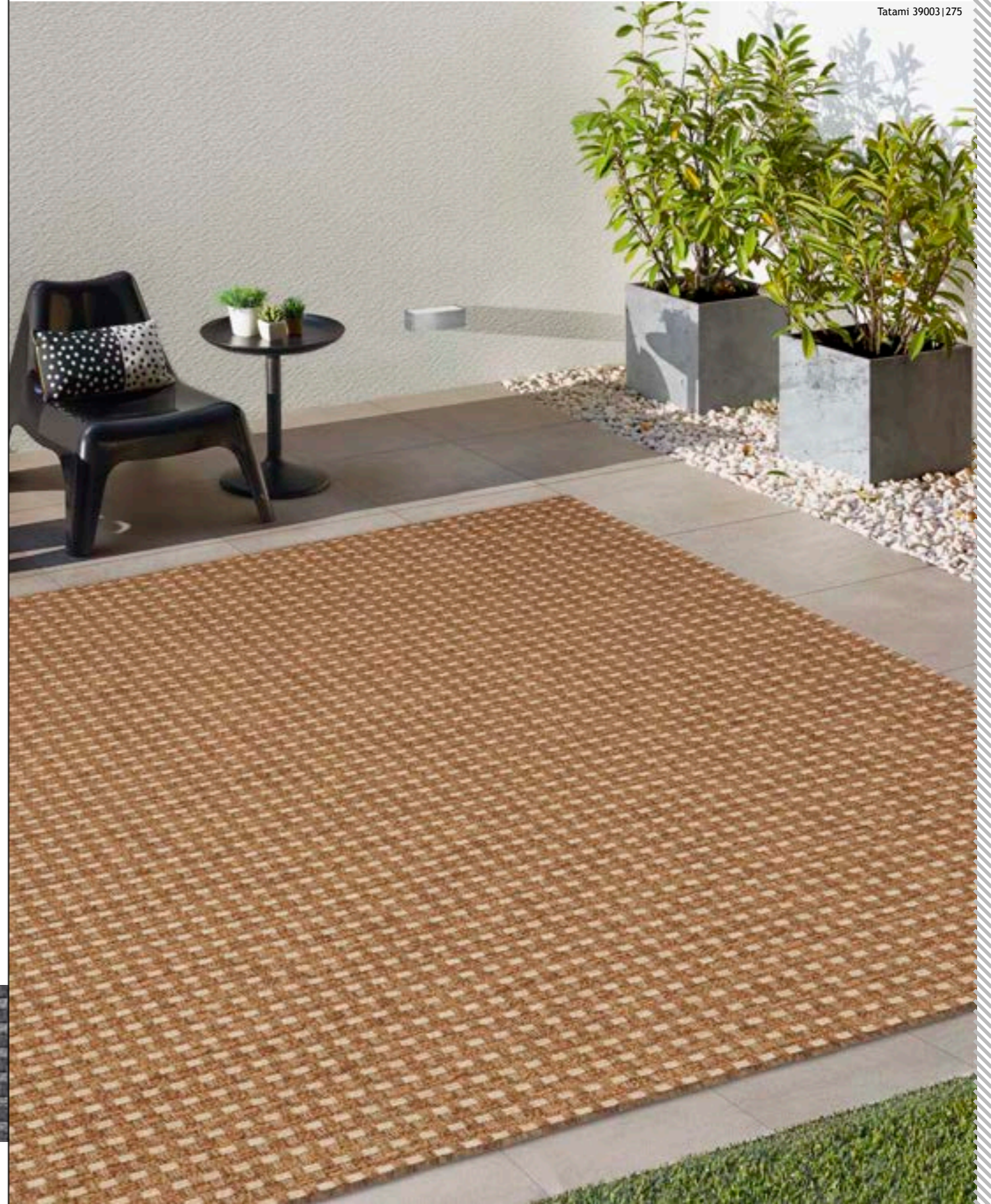
39003/388



39003/275



39003/896



Tatami 39003|275

— CAYO —



89004/100199



89004/400299



89004/200499



Ref. / (cm)	80x150	140x200	160x230	200x290
-------------	--------	---------	---------	---------

70% Polipropileno | polypropylène | polypropylene | polypropylen
30% Poliéster | polyester | polyester

Espeçura Grosor Épaisseur Thickness Höhe	Peso Poids Weight Gewicht
---	----------------------------------

3 mm

885 g/m²



89001/200399

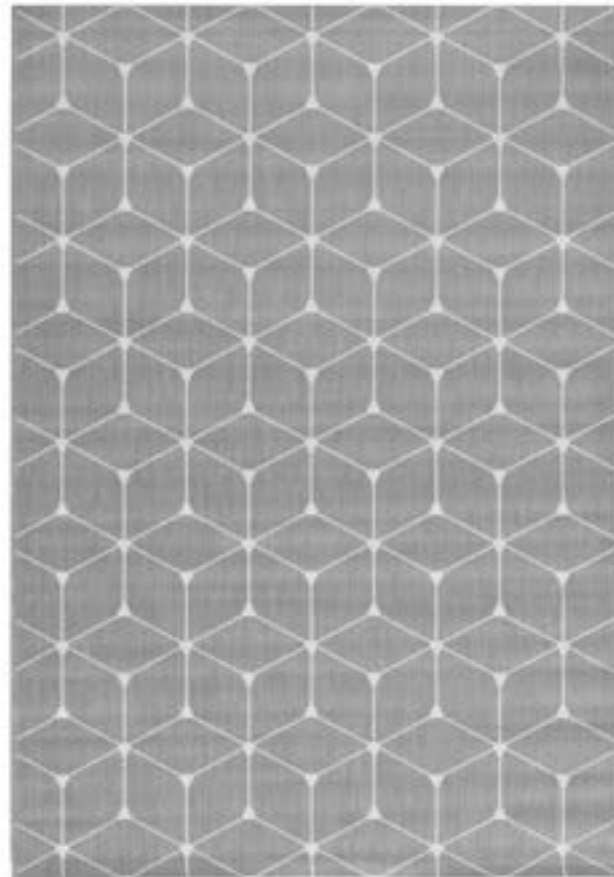


89001/300199



Cayo 89004/400299

— KIRIBATI II —



48721/637



48721/686



48731/637



48731/686



In & Out

Ref. / (cm)	80x150	140x200	160x230	200x290
-------------	--------	---------	---------	---------

100% Polipropileno | Polypropylène | Polypropylene | Polypropylen
 Interior/ Exterior- resistente a raios UV e água
 Intérieur/Extérieur - résistant aux rayons UV et à l'eau
 Indoor/ Outdoor - UV resistant / water resistant
 Innen/Aussen - UV - Strahlungen und Wasserfest

Essatura Grosor Épaisseur Thickness Höhe	Peso Poids Weight Gewicht
---	----------------------------------

5 mm	1500 g/m ²
------	-----------------------



Kiribati II 48721/637

— BROADWAY —



Ref. / (cm)	80x150	120x170	140x200	160x230	200x290
-------------	--------	---------	---------	---------	---------

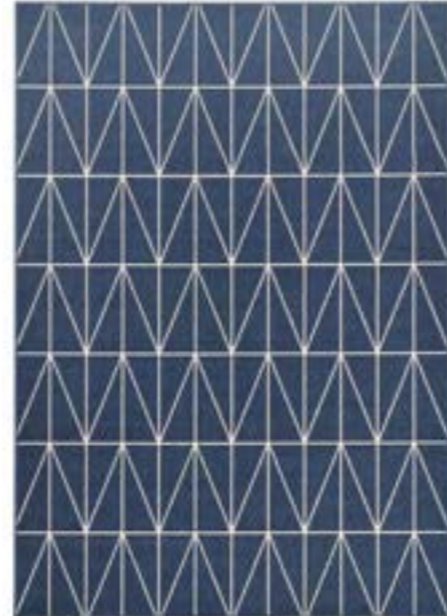
100% Polipropileno Polypropylène Polypropylene Polypropylen	Espezzura Grosor	Peso
	Épaisseur Thickness Höhe	Poids Weight Gewicht
	4 mm	1100 g/m ²



20412/963



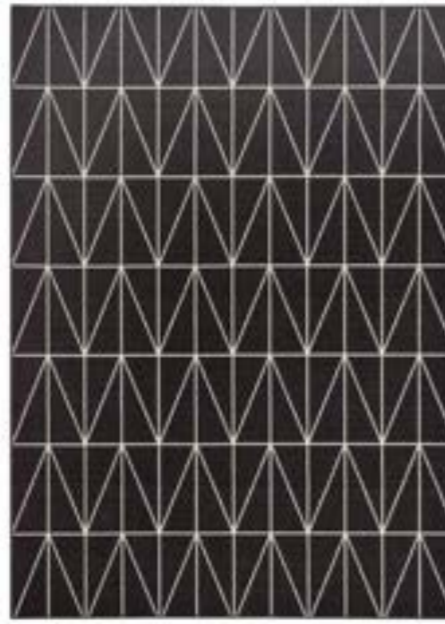
20412/632



20412/694



20412/658



20412/693



20414/332



20414/994



20414/993



Broadway 20414/994



— BROADWAY —



20404/558



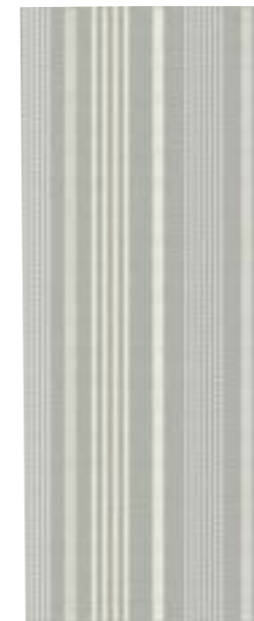
20404/664



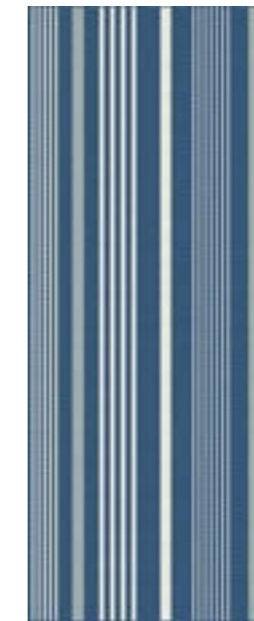
20404/332



20404/994



20459/332



20459/994



20405/632



20405/694

Ref. / (cm)	80x150	80x200	120x170	140x200	160x230	200x290
Todas as referencias excepto 20459/332 , 20459/994, 20405/632, 20405/694 Todas las referencias excepto 20459/332 , 20459/994, 20405/632, 20405/694 Toutes les références à l'exception 20459/332 , 20459/994, 20405/632, 20405/694 All references except 20459/332 , 20459/994, 20405/632, 20405/694 Alle Referenzen ausser 20459/332 , 20459/994, 20405/632, 20405/694	●		●	●	●	●
20459/332 , 20459/994, 20405/632, 20405/694		●				



100% Polipropileno | polypropylène | polypropylene | polypropylen

Espezzura | Grosor
Épaisseur | Thickness | Höhe

4 mm

Peso
Poids | Weight | Gewicht

1100 g/m²



Broadway 20404/558

— BROADWAY —

Ref. / (cm)	80x150	120x170	140x200	160x230	200x290
-------------	--------	---------	---------	---------	---------



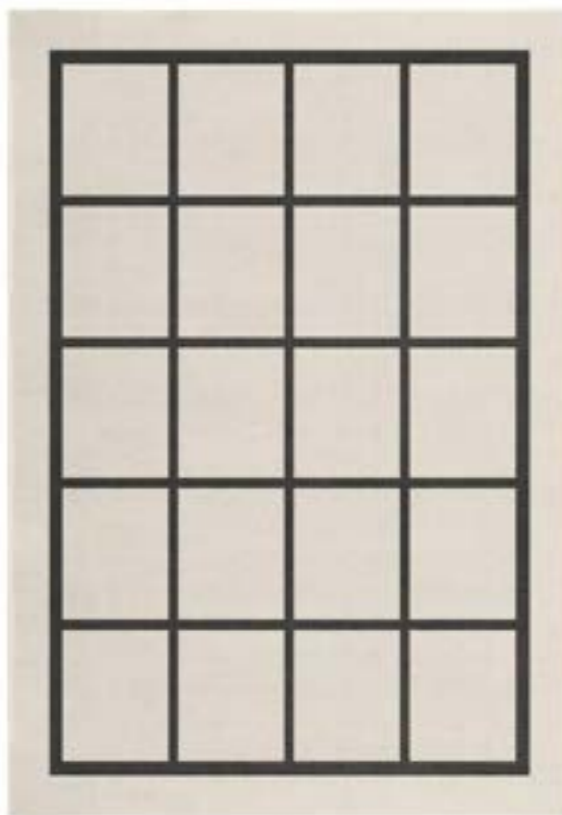
100% Polipropileno
polypropylène |
polypropylene
polypropylen

Espezzura | Grosor
Épaisseur | Thickness | Höhe
4 mm

Peso
Poids | Weight | Gewicht
1100 g/m²



Broadway 20427/332



20428/663



20426/558



20427/558



20427/332



— JUNKO —

Ref. / (cm)	80x150	120x170	160x230	200x290
-------------	--------	---------	---------	---------

100% Polipropileno | Polypropylène
Polypropylene | Polypropylen

Espessura | Grosor
Épaisseur | Thickness | Höhe

Peso
Poids | Weight | Gewicht



5 mm

1100 g/m²



46202/561



46209/651



46219/051



46219/651



46203/651



Junko 46209/651

— HABANA —



100% Polipropileno
Polypropylène
Polypropylene
Polypropylen

Espessura | Grosor
Épaisseur | Thickness | Höhe

Peso
Poids | Weight | Gewicht

5 mm

1185 g/m²



Ref. / (Cm)	80x150	140x200	160x230	200x290	80x240
98738/201799	•	•	•	•	
98738/304299	•	•	•	•	•
98738/304399	•	•	•	•	
98738/401699	•	•	•	•	
98738/503199	•	•	•	•	•



98738/201799



98738/304299



98738/304399



98738/401699



98738/503199



— SANTIAGO —



Ref. / (cm)	080x150	120x170	140x200	160x230	200x290
-------------	---------	---------	---------	---------	---------

100% Polipropileno Polypropylène Polypropylene Polypropylen 	Espeçura Grosor Épaisseur Thickness Höhe	Peso Poids Weight Gewicht
	5 mm	1185 g/m ²



98707/101099



98707/201699



98707/303899



98707/303999



98707/502999



Santiago 98707/502999

— TROPICAL —



003



001



002



Ref. / (cm)	123x180	160x230	206x290	246x340
-------------	---------	---------	---------	---------

74% Polipropileno | Polypropylène | Polypropylene | Polypropylen
26% Poliéster | Polyester | Polyester

Espeçura Grosor Épaisseur Thickness Höhe	Peso Poids Weight Gewicht
---	----------------------------------

3,5 mm

1000 g/m²



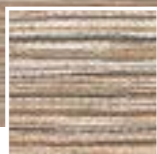
Tropical 002



—VARADERO—



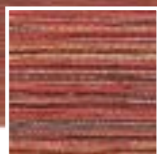
98122/200199



98122/600196



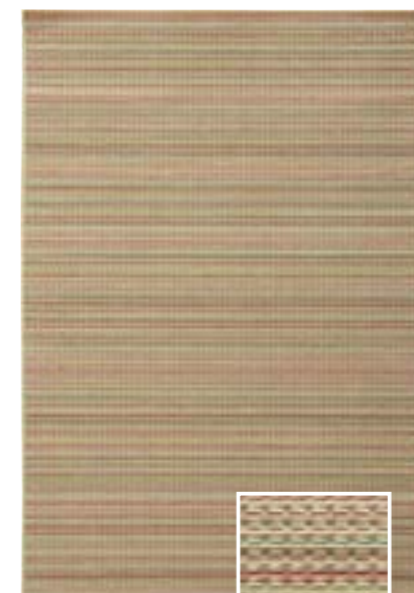
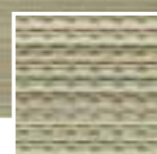
98122/100099



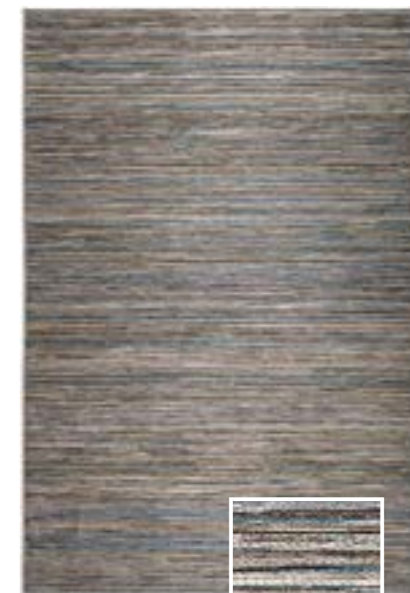
98122/300099



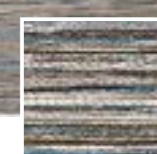
98160/401196



98160/801296



98122/200399



Ref. / (cm)	080x150	080x240	120x170	140x200	160x230	200x290
98122/200199	•	•	•	•	•	•
98122/600196	•		•	•	•	•
98122/100099	•		•	•	•	•
98122/300099	•	•	•	•	•	•
98160/401196	•		•	•	•	•
98160/801296	•		•	•	•	•
98122/200399	•		•	•	•	•



100% Polipropileno Polypropylène | Polypropylene | Polypropylen

Espessura | Grosor

Épaisseur | Thickness | Höhe

Peso

Poids | Weight | Gewicht



5 mm

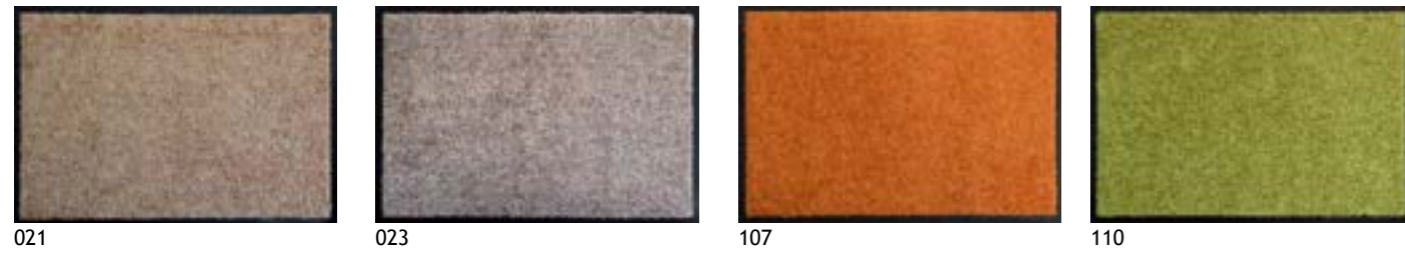
1185 g/m²



-CAPACHOS-

FELPUDOS | DOORMATS | PAILLASSONS

WASH & CLEAN

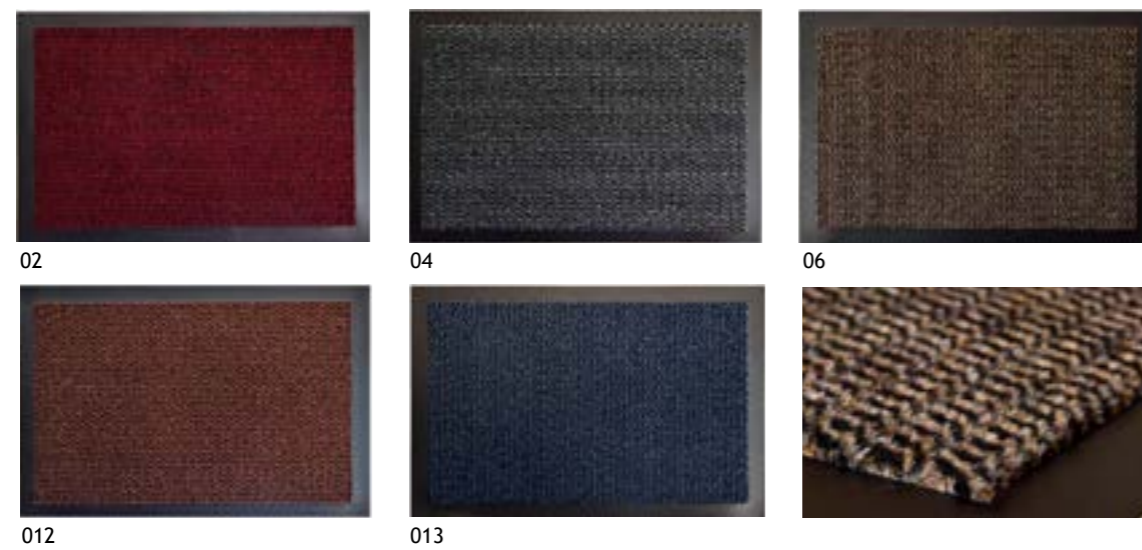


Ref. / (cm)	40x60	60x90	100 % Poliamida Polyamide	Espeçura Grosor Épaisseur Thickness Höhe	Peso Poids Weight Gewicht
Todas as referências Todas las referencias Toutes les références All references Alle Referenzen			Lavar maquina máx. 30°C Lavadora máx. 30.° C Machine max. 30.°C Machine wash max. 30.° C Waschmaschine max. 30.°C	9 mm	2900 g/m2



Uso doméstico / contract | Domestic use / contract |

FARO



Ref. / (cm)	40x60	60x80	100 % Polipropileno polypropylène polypropylene	Espeçura Grosor Épaisseur Thickness Höhe	Peso Poids Weight Gewicht
Todas as referências Todas las referencias Toutes les références All references Alle Referenzen			Lavar maquina máx. 30°C Lavadora máx. 30.° C Machine max. 30.°C Machine wash max. 30.° C Waschmaschine max. 30.°C	9 mm	2900 g/m2

Uso doméstico | Domestic Use

OLYMPIA



Ref.(cm)	40x60	60x80	100 % Polipropileno Polypropylène Polypropylene	Espeçura Grosor Épaisseur Thickness Höhe	Peso Poids Weight Gewicht
Todas as referências Todas las referencias Toutes les références All references Alle Referenzen			Lavar à mão máx. 30.°C Lavado à mano máx. 30.°C Hand wash max. 30.°C Handwaschen max. 30.°C	7 mm	2800 g/m2

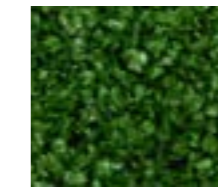


Uso doméstico | Domestic Use | Haushaltsverbrauch

GRASS MAT



Ref. / (cm)	40x60	100 % Polipropileno Polypropylène Polypropylen	Espeçura Grosor Épaisseur Thickness Höhe
101			9 mm



101



-NATURAL-

ALCATIFAS | MOQUETAS | WALL TO WALL | TAPIS SUR MESURE



022



012



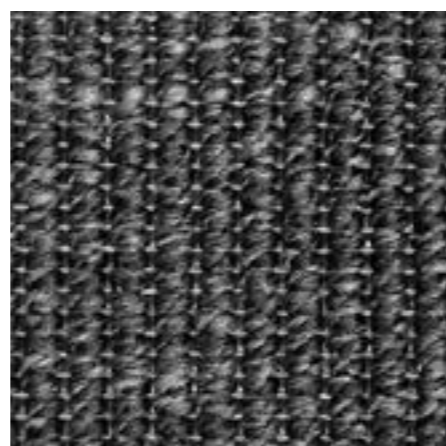
014



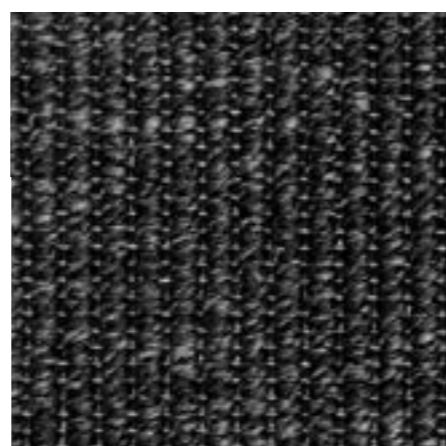
016



031



072



040



In & Out

100% PP flatweave (Polipropileno Polypropylene)	Espeçura Grosor Épaisseur Thickness Höhe	Peso Poids Weight Gewicht
	4,4 mm	1530 g/m ²



Serviço a Corte | Servicio de corte | Cut service | Service de découpe:

Largura 2 ou 4 m / Corte medida real
Ancho 2,00 o 4,00 m / Corte real

Width 2,00 or 4,00 m / Cut real size
Largeur 2,00 o 4,00 m / Découpe réel



-NATURAL CHEVRON-

ALCATIFAS | MOQUETAS | WALL TO WALL | TAPIS SUR MESURE



022



012



014



016



031



072



040



In & Out

100% PP flatweave (Polipropileno Polypropylene)	Espeçura Grosor Épaisseur Thickness Höhe	Peso Poids Weight Gewicht
	3,4 mm	1600 g/m ²



Serviço a Corte | Servicio de corte | Cut service | Service de découpe:

Largura 2 ou 4 m / Corte medida real
Ancho 2,00 o 4,00 m / Corte real

Width 2,00 or 4,00 m / Cut real size
Largeur 2,00 o 4,00 m / Découpe réel



-NATURAL BOUCLE-

ALCATIFAS | MOQUETAS | WALL TO WALL | TAPIS SUR MESURE



22



16



31



40



100% PP flatweave (Polipropileno Polypropylene)	Espeçura Grosor Épaisseur Thickness Höhe	Peso Poids Weight Gewicht
	5,6 mm	1790 g/m ²

Serviço a Corte | Servicio de corte | Cut service | Service de découpe:
 Largura 2 ou 4 m / Corte medida real
 Ancho 2,00 o 4,00 m / Corte real
 Width 2,00 or 4,00 m / Cut real size
 Largeur 2,00 o 4,00 m / Découpe réel

-NATURAL PANAMA-

ALCATIFAS | MOQUETAS | WALL TO WALL | TAPIS SUR MESURE



16



31



100% PP flatweave (Polipropileno Polypropylene)	Espeçura Grosor Épaisseur Thickness Höhe	Peso Poids Weight Gewicht
	5,5 mm	1790 g/m ²

Serviço a Corte | Servicio de corte | Cut service | Service de découpe:
 Largura 2 ou 4 m / Corte medida real
 Ancho 2,00 o 4,00 m / Corte real
 Width 2,00 or 4,00 m / Cut real size
 Largeur 2,00 o 4,00 m / Découpe réel



IN&OUT - NATURAL BOUCLE / PANAMA

-NATURAL BAHIA-

ALCATIFAS | MOQUETAS | WALL TO WALL | TAPIS SUR MESURE



4211



4225



4265



In & Out

100% PP flatweave (Polipropileno Polypropylene)	Espeçura Grosor Épaisseur Thickness Höhe	Peso Poids Weight Gewicht
	5,0 mm	1640 g/m ²

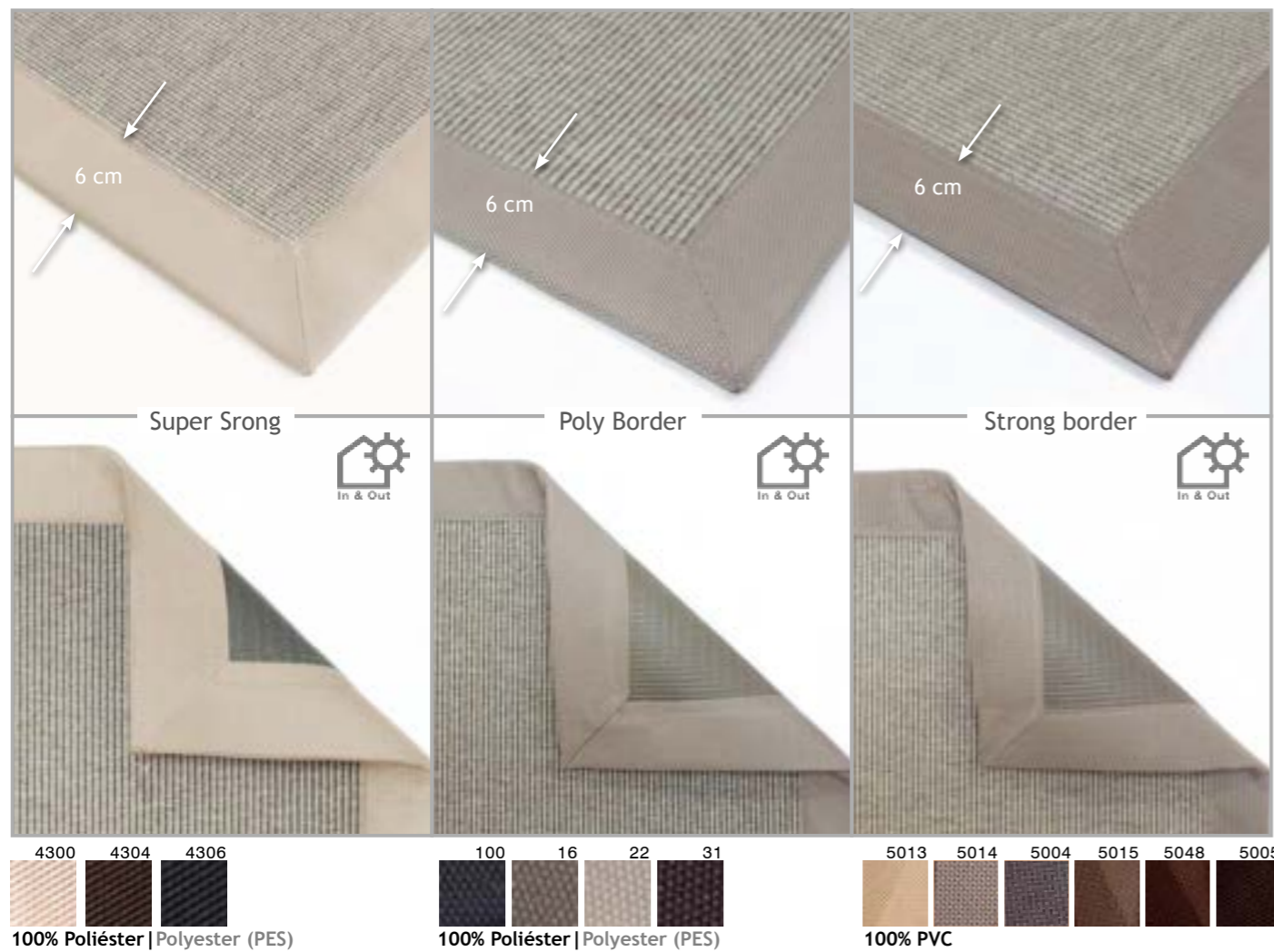


Serviço a Corte | Servicio de corte | Cut service | Service de découpe:

Largura 2 ou 4 m / Corte medida real
Ancho 2,00 o 4,00 m / Corte real

Width 2,00 or 4,00 m / Cut real size
Largeur 2,00 o 4,00 m / Découpe réel





Várias cores | varios colores
many colors | plusieurs coloris
100% Poliéster | Polyester (PES)

Ultratex

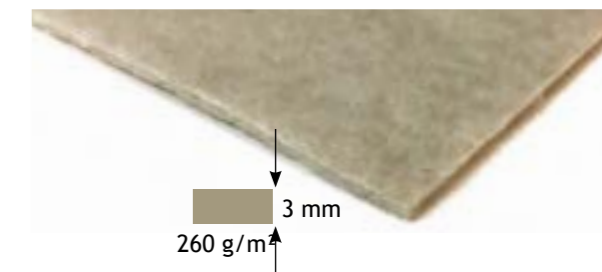
Proteção/isolamento | Protección/aislamiento
Protection/insulation | Protection / Isolation



2 cores disponíveis | 2 colores posibles
2 colors available | 2 coloris disponibles

Ultratex antiderrapante

(antideslizante | anti-slip | antiglisse)
Proteção/isolamento | Protección/aislamiento
Protection/insulation



Firm Step / Power Step

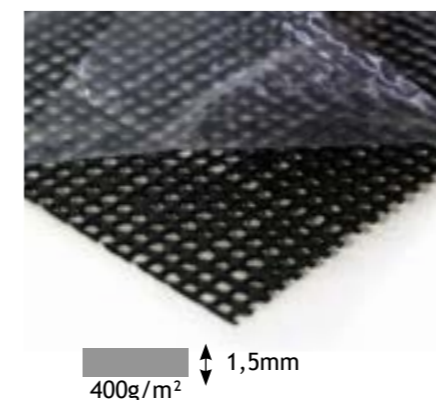
Conforto-extra | extra-confortable | extra comfort | confort extra
Insonorização | insonorización | sound insulation | Insonorisation



ANTI-DERRAPANTES | ANTI-DESLIZANTES | ANTI-SLIP | ANTI -GLISSANTS

Ako Kleber

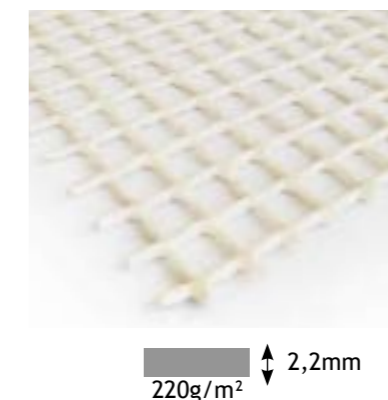
PES+Fibra de vidro+acrílico adesivo
PES + Glass fibre+acrylic adhesive
PES + Fibre de verre +acrylique adhésif



Adesivo | autoaderente |
self adhesive | adhésif

Ako Extra

PES+ PVC Fibra de vidro
PES+PVC+Glass fibre
PES+PVC+ Fibre de verre



220g/m²

Ako Silber

PES+PVC+Fibra de vidro
PES+PVC+Glass fibre / Fibre de verre



270g/m²



Ako Silber
Aplicação nos cantos
Aplicación en las esquinas
Applied in each corner
Appliqué dans les coins





Showroom

M.A. Salgueiro, SA
Rua dos Limites n.º 75
4501-854 Espinho, Portugal

Call center

T. (+351) 227 335 200
F. (+351) 227 330 500
geral@masalgueiro.pt
www.masalgueiro.pt

International call center

T. (+351) 227 335 261 (272/263)
export@masalgueiro.pt

France

T. (+351) 227 335 263 (261)
france@masalgueiro.pt

Financiado por:

